

# MA 109: August 31

Composition of Functions

Start of Class

Instructor Information

Name:

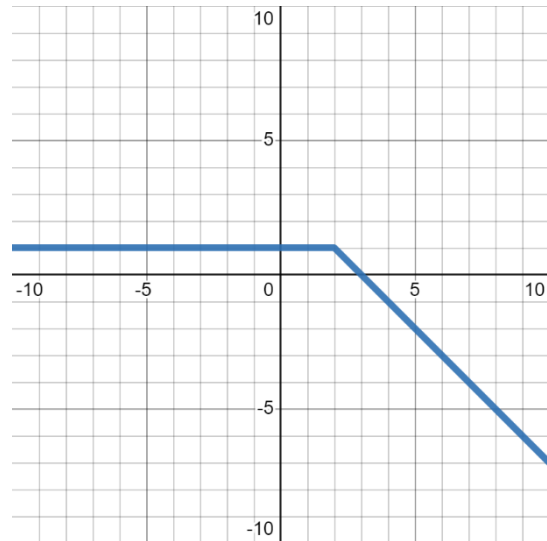
Email:

Office Hours:

Warm-up Questions

## Notes

**Example:** Suppose  $f(x) = x^2 - 7$  and  $g(x)$  is given in the graph below. What is  $f(g(4))$ ?



**Example:** Suppose  $f(x) = x^2 + 7$  and  $g(x) = 3 - x$ . What is  $f(g(x))$ ?

## End of Class

Write a summary of what you learned today:

What questions do you have about the material from today?

What do you need to do between now and the next class meeting?