

**Exam 3**

Name: \_\_\_\_\_ Section: \_\_\_\_\_

Do not remove this answer page — you will return the whole exam. You will be allowed two hours to complete this test. No books or notes may be used. You may use a graphing calculator during the exam, but NO calculator with a Computer Algebra System (CAS) or a QWERTY keyboard is permitted. Absolutely no cell phone use during the exam is allowed.

The exam consists of 10 multiple choice questions and 5 free response questions. Record your answers to the multiple choice questions on this page by filling in the circle corresponding to the correct answer.

Show all work to receive full credit on the free response problems. Also, it helps you to show work on multiple choice problems so you can re-check your answers.

## Multiple Choice Questions

1     A     B     C     D     E6     A     B     C     D     E2     A     B     C     D     E7     A     B     C     D     E3     A     B     C     D     E8     A     B     C     D     E4     A     B     C     D     E9     A     B     C     D     E5     A     B     C     D     E10     A     B     C     D     E

Multiple Choice	11	12	13	14	15	Total Score
50	10	10	10	10	10	100

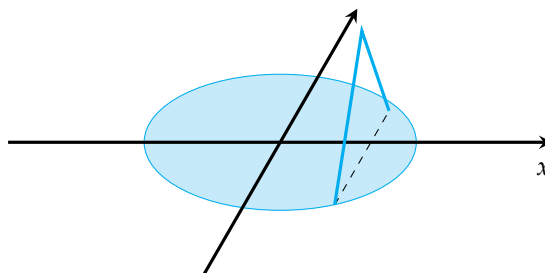
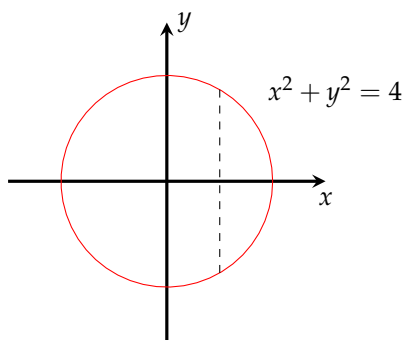
## Multiple Choice Questions

1. (5 points) Find the average value of the function  $f(x) = \cos^4 x \sin x$  on  $0 \leq x \leq \pi$ .

- A.  $\frac{2}{5\pi}$
- B.  $\frac{5}{2\pi}$
- C. 0
- D. 4
- E. 5

2. (5 points) The base of a solid  $S$  is the circle  $x^2 + y^2 = 4$  and the parallel cross-sections perpendicular to the base are equilateral triangles. Remember that if an equilateral triangle has side length  $s$ , its area is  $\frac{\sqrt{3}}{4}s^2$ . Which of the following integrals correctly computes the volume of the solid?

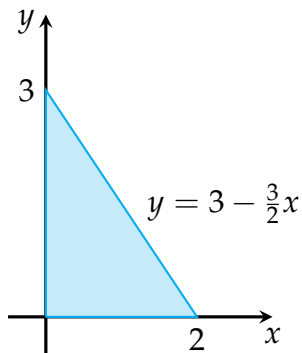
- A.  $\int_{-2}^2 \sqrt{4-x^2} dx$
- B.  $\int_{-2}^2 \sqrt{3}(4-x^2) dx$
- C.  $\int_{-2}^2 \frac{\sqrt{3}}{2}(4-x^2) dx$
- D.  $\int_{-2}^2 (4-x^2)^2 dx$
- E.  $\int_{-2}^2 \sqrt{1+4x^2} dx$



3. (5 points) Which of the following is the Cartesian equation for the parametric curve  $x(t) = \sin t, y(t) = 1 - \cos t$ ?

- A.  $x^2 + y^2 = 1$
- B.  $x^2 + (y + 1)^2 = 1$
- C.  $x^2 + (y - 1)^2 = 1$
- D.  $(x - 1)^2 + y^2 = 1$
- E.  $x^2 + y^2 = 2xy$

4. (5 points) What is the center of mass of the triangular region shown?



- A.  $(1/3, 2/3)$
- B.  $(3, 2)$
- C.  $(2, 3)$
- D.  $(2/3, 1)$
- E.  $(1/3, 1/3)$

5. (5 points) Which of the following integrals computes the arc length of the curve  $x = 1 + 3t^2$ ,  $y = 4 + 2t^3$  for  $0 \leq t \leq 1$ ?

A.  $\int_0^1 \sqrt{1 + (6t)^2 + (36t^2)^2} dt$

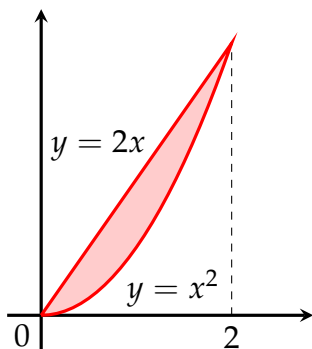
B.  $\int_0^1 \sqrt{(1 + 3t^2)^2 + (4 + 2t^3)^2} dt$

C.  $\int_0^1 \sqrt{3t^2 + 2t^3} dt$

D.  $\int_0^1 \sqrt{2t^2 + 3t^3} dt$

E.  $\int_0^1 \sqrt{(6t)^2 + (6t^2)^2} dt$

6. (5 points) Which of the following integrals computes the volume of the solid obtained by rotating the region between the curves  $y = x^2$  and  $y = 2x$  about the  $x$ -axis?



A.  $\int_0^2 2\pi(2x - x^2) dx$

B.  $\int_0^2 2\pi(x^2 - 2x) dx$

C.  $\int_0^2 \pi(4x^2 - x^4) dx$

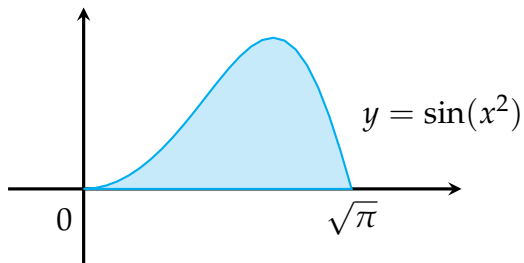
D.  $\int_0^2 \pi(x^4 - 4x^2) dx$

E.  $\int_0^2 \pi(2x - x^2)^2 dx$

7. (5 points) If  $x = e^t \cos t$  and  $y = e^t \sin t$ , then  $dy/dx =$

- A.  $e^t \tan t$
- B.  $(\cos t + \sin t)/(\cos t - \sin t)$
- C.  $(e^t \cos t)/(e^t \sin t)$
- D.  $(\cos t - \sin t)/(\cos t + \sin t)$
- E.  $(e^t \sin t)/(e^t \cos t)$

8. (5 points) Find the volume of the solid obtained by rotating the region shown in the figure about the  $y$ -axis.



- A.  $\pi/2$
- B.  $\pi$
- C.  $3\pi/2$
- D.  $2\pi$
- E.  $4\pi$

9. (5 points) A surface  $S$  is obtained by rotating the curve

$$x = t \sin t, y = t \cos t, \quad 0 \leq t \leq \pi/2$$

about the  $x$ -axis. The area of the surface  $S$  is:

A.  $S = \int_0^{\pi/2} 2\pi t \cos(t) \sqrt{1+t^2} dt$

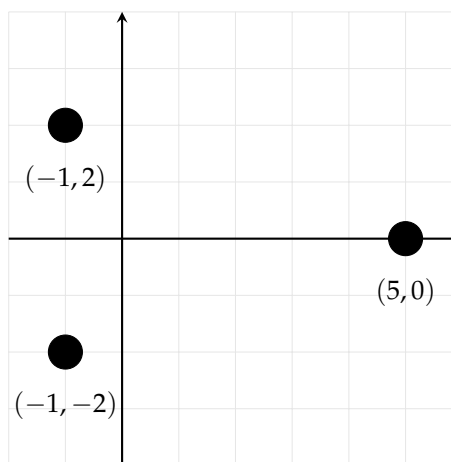
B.  $S = \int_0^{\pi} 2\pi t \cos(t) \sqrt{1+t^2} dt$

C.  $S = \int_0^{\pi} 2\pi t \sin(t) \sqrt{1+t^2} dt$

D.  $S = \int_0^{\pi} 2\pi t^2 \sin(t) dt$

E.  $S = \int_0^{\pi/2} 2\pi t^2 \sin(t) dt$

10. (5 points) Find the center of mass of the three equal-mass particles shown in the figure at right.



- A.  $(-1, 0)$   
B.  $(0, 0)$   
C.  $(1, 0)$   
D.  $(2, 0)$   
E.  $(3, 0)$

## Free Response Questions

11. (10 points) Find the points  $(x, y)$  on the curve  $x = \cos t, y = \cos 3t, 0 \leq t \leq \pi$ , where the tangent line is horizontal.

12. (a) (5 points) Set up but do not evaluate an integral for the exact arc length of the curve

$$x = t \sin t, y = t \cos t, \quad 0 \leq t \leq 1$$

Your final answer should not involve trig functions.

- (b) (5 points) Find  $dy/dx$  and  $d^2y/dx^2$  for the curve  $x = t^2 + 1, y = t^2 + t$ . For what values of  $t$  is the curve concave upward?



13. (a) (5 points) Find the area enclosed by the curve  $x = a \cos^2 \theta$ ,  $y = a \sin^2 \theta$  between  $\theta = 0$  and  $\theta = \pi/2$ .

- (b) (5 points) Find the center of mass of the region bounded by the circle  $x^2 + y^2 = 4$  and the  $x$ -axis.

14. Using the method of cylindrical shells, find the volume generated by rotating the region bounded by the curves

$$y = e^{-x^2}, \quad y = 0, \quad x = 0, \quad x = 1$$

about the  $y$ -axis.

15. Let  $\mathcal{R}$  be the region bounded by the curves  $y = x^3$ ,  $y = 0$ , and  $x = 1$ . Find the volume obtained by rotating  $\mathcal{R}$  about the line  $x = 2$ . You may use either the washer or shell method, but be sure to make clear which method you are using and illustrate with a careful sketch.